

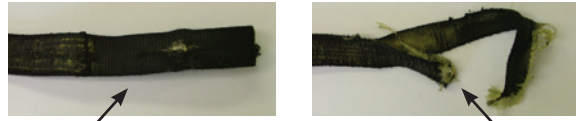


Rigging Training



If your workers are using products that look like this, they need to update their training on safe rigging practices

Keep your workforce **SAFE!**



THIS ... QUICKLY TURNS... INTO THIS!

This sling, in new condition, should break at 31,000 lbs. This one failed at 7,040 lbs because of its poor condition.



Courses catered to your needs!

- Ben-Mor is a member of the Industrial Training International Advanced Rigging Network — a training partnership providing world class crane and rigging training to customers like you.

We will not come in and train your people on chain slings, when you do not own a chain sling. The course material is specifically set up to **CATER TO EXACTLY WHAT YOU NEED**, to maximize the time we spend with your people. The training will teach your people how to rig safe and prevent accidents as well as how to extend the life of their slings and lifting components.

Intro to Rigging

2 Hours
Your site or ours

What do you learn?

- Sling identification
- 2 Hours
- Inspection criteria
- Removal criteria for web slings, wire rope slings, chain slings, and roundslings
- Prevention of sling damage, using wear protection

What does each attendee receive?

- Pocket reference cards
- Workbook
- Certificate of attendance

Who should attend?

- Production workers

Rigging Fundamentals

4 Hours
Your site or ours

What do you learn?

- Sling identification
- Inspection criteria
- Removal criteria for web slings, wire rope slings, chain slings, and roundslings.
- Sling types and hitches
- Safe lifting practices

What does each attendee receive?

- Pocket reference cards
- Workbook
- Certificate of attendance

Who should attend?

- Safety coordinators
- Production workers
- Senior production or trades

Basic Rigger Course

8 Hours
Your site or ours

What do you learn?

- Employer/employee responsibilities
- ASME B30.9 standards
- Sling identification
- Inspection criteria
- Removal criteria for all slings
- Sling hitches
- OSHA regulations
- D/d ratios
- Load angle reductions
- Environmental considerations
- Repairs & certifications
- Hands on testing

What does each attendee receive?

- Pocket reference cards
- Workbook
- Certificate of completion upon test results of 80% or higher
- Lunch

Who should attend?

- Site supervisor
- Foremen
- Production managers
- Safety coordinators
- Senior production or trades

